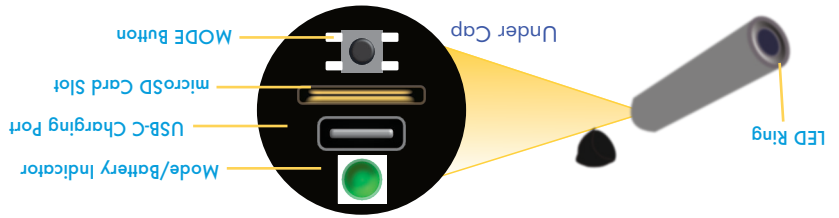


Operating Instructions inside



- Please note the H2GO will automatically power on until the charging cable is removed.
- The Mode/Battery Indicator will display BLUE. When the battery is fully charged, the Mode/Battery Indicator will turn off.
- To charge the battery, simply plug in the provided USB cable to the wall plug and the other end to the USB-C Charging Port under the cap.

Charging Internal Battery

- The brightness of the LED Ring can be adjusted during the 15 second flashing period by pressing the Mode Button (Same as STANDARD Operating Mode). Default brightness is set at maximum. As with STANDARD Operating Mode, the H2GO will power down if the Mode Button is pressed after the lowest LED Ring brightness level has been selected during the 15 second second flashing period.
- To exit LOGGING Mode, press and release the Mode Button while in LOGGING Mode.
- Press and hold the Mode Button until the Mode/Battery Indicator turns on. As in standard operating, the Mode/Battery Indicator will display battery level.
- In LOGGING Mode, the LED Ring will blink for 15 seconds, then automatically turn off the LED Ring, the Mode/Battery Indicator will display BLUE for 1 second then turn off. During LOGGING Mode, the LED Ring will flash every 10 seconds. The H2GO will now wake up every hour and record a 20 second video.
- The brightness of the LED Ring can be adjusted during the 15 second flashing period by pressing the Mode Button (Same as STANDARD Operating Mode). Default brightness is set at maximum. As with STANDARD Operating Mode, the H2GO will power down if the Mode Button is pressed after the lowest LED Ring brightness level has been selected during the 15 second second flashing period.

LOGGING Operating Mode dipper-See H2GO

- Allow for the H2GO to complete the power down sequence before removing the microSD Card.
- LED Ring is initially set to maximum brightness when the H2GO powers up. Pressing the Mode Button 1x will reduce the brightness to medium level. Pressing the Mode Button 2x will reduce the brightness level to low. Pressing the Mode Button 3x will Power off the H2GO. The power down sequence will briefly flash the LED Ring and the Mode/Battery Indicator will display RED until it is safely powered down.
- The H2GO will automatically start to record video upon starting up in STANDARD OPERATING MODE.
- The colour of the Mode/Battery Indicator will depend on remaining battery life. It will display GREEN to indicate a full charge and RED to indicate the battery needs to be recharged.
- The Mode/Battery Indicator will remain on for 4 seconds then turn off. Please note that the Mode Button is ignored when the Mode/Battery Indicator light is on.
- Press and release Mode Button. H2GO will power on, LED Ring will turn on and Mode/Battery Indicator will also turn on.
- The colour of the Mode/Battery Indicator will depend on remaining battery life. It will display GREEN to indicate a full charge and RED to indicate the battery needs to be recharged.

STANDARD Operating Mode dipper-See H2GO

Warranty:
2 Year Manufacturing Defect

Case Warranty:
Lifetime Warranty

HERON ALSO MANUFACTURES:

- Water Level Meters
- Well Casing Indicators
- Data Loggers
- Well Depth Indicators
- Interface Meters
- Downhole Inspection Cameras
- Conductivity Meters
- Remote Monitoring Systems
- Temperature Meters

HERON INSTRUMENTS INC.

447 Moxley Road | Dundas, ON Canada L9H 5E2

1-800-331-2032 | info@heroninstruments.com

Please visit our website www.heroninstruments.com for more information on the complete Heron line.

Warning: This camera may potentially trigger seizures for people with photosensitive epilepsy.

User discretion is advised.



dipper-See H2GO Illuminated Underwater Drop Camera

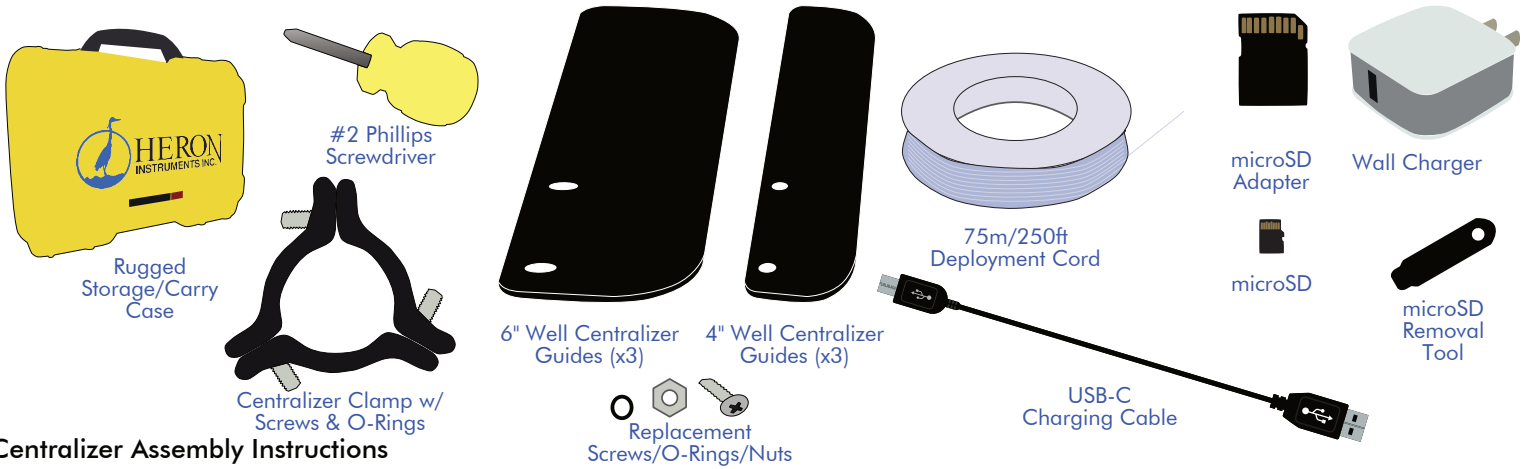


www.heroninstruments.com

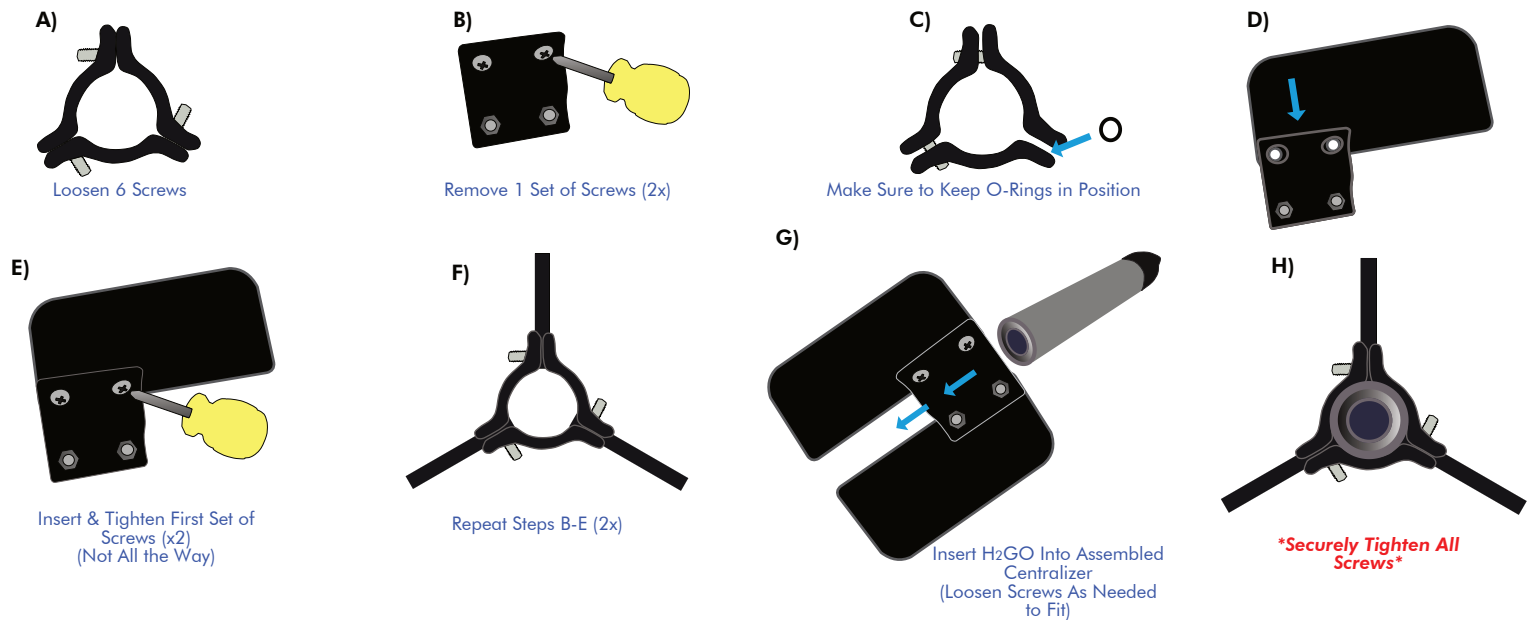


dipper-See H₂GO Instructions

What Is Included?

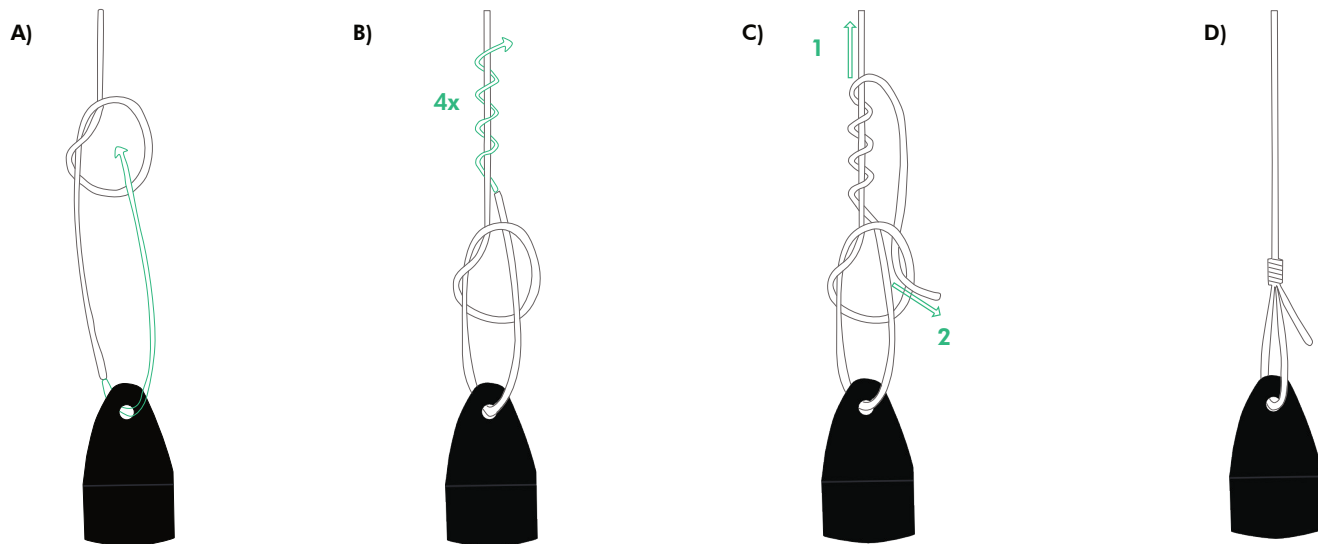


Centralizer Assembly Instructions



Suggested Knot For Deployment Cord

Note: Do NOT let H₂GO to "free-fall" down the well as this can cause damage to the camera.



Carefully Lower the Camera Probe to Prevent Damage